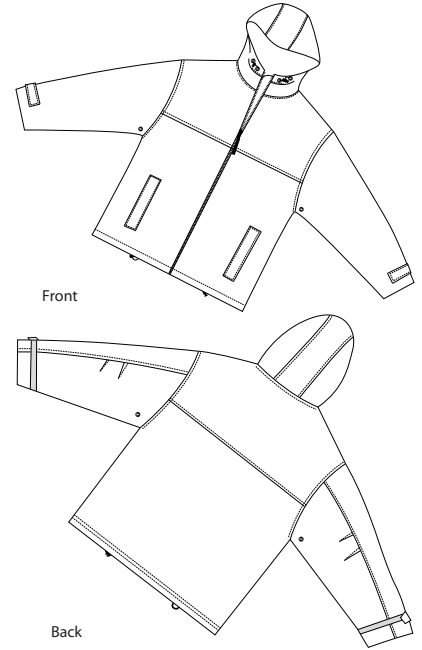


# Seattle Slicker

PORT AUTHORITY®



Front

Back

J771

- \* PVC coated nylon shell \* Mesh nylon-lined body \* Mesh grommets
- \* Easily adjustable cuffs with Velcro closures \* Open hem
- \* Interior pocket with Velcro closure
- \* Port Pocket™ for easy embroidery on left chest and back
- \* Zip close exterior pockets

Care Instructions:  
Machine wash cold with similar colors.  
Do not bleach. Do not tumble dry. Do not iron. Do not dry clean.

## Finished Measurements in Inches

Size	XS	S	M	L	XL	2XL	3XL	4XL
Length	31	31.5	32	32.5	33	33.5	34	34.5
Chest	22.5	24	25.5	27	28.5	30	31.5	33
Sleeve	32	34	36	36.5	37	37.5	38	38.5
Areas for Decoration	L/R Chest, Upper/Lower Back		Port Pocket™		NA			

Chest width measured 1" below arm hole. Body length measured from front neck seam to hem.  
Sleeve length measured from center back seam to hem.

## Colors

	Goldenrod/Navy
	Hunter/Navy
	Natural/Navy
	Navy/Navy

Please Note:  
Colors shown are approximate and for reference only. For closest match see PMS colors, or for exact match, returnable samples and grommets samples are available.

## Color Chart

Color	Goldenrod	Hunter	Natural	Navy
Textile PMS	14-0955TC	19-4906TC	15-6304TC	19-4025TC
General PMS	7408C	5467C	414C	533C